



AIR VELOCITY TRANSMITTERS

EE660

DESCRIPTION

The **E+E EE660 airflow velocity transmitter** is designed to accurately measure low air velocities. It is the ideal solution for laminar flow control and special ventilation applications for instance in clean rooms.

The **E+E** thin film sensor used in **EE660** operates on the hot film anemometer principle, which provides accuracy down to 0.15 m/s (30 ft/min) and high insensitivity to pollution.

The device has current and voltage analog outputs (both signals are available on the terminal) as well as an optional LCD backlight display. The measurement range and the response time can be selected via a jumper.

NEW!



EE660 Duct



EE660 Remote



6

FLOW

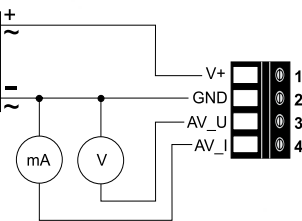
FEATURES

- **Display is large, easily readable with a backlight and 180° rotatable**
- **Smooth cover surface with no accumulation of dust in protruding edges**
- **Electronics on the underside of the PCB**
- **E+E Air velocity sensor VTM**
- **External mounting holes with a closed cover**

WIRING

power supply
24V AC/DC ± 20%

V+ = supply voltage
GND = ground
AV_U = airflow voltage output
AV_I = airflow current output



SPECIFICATIONS

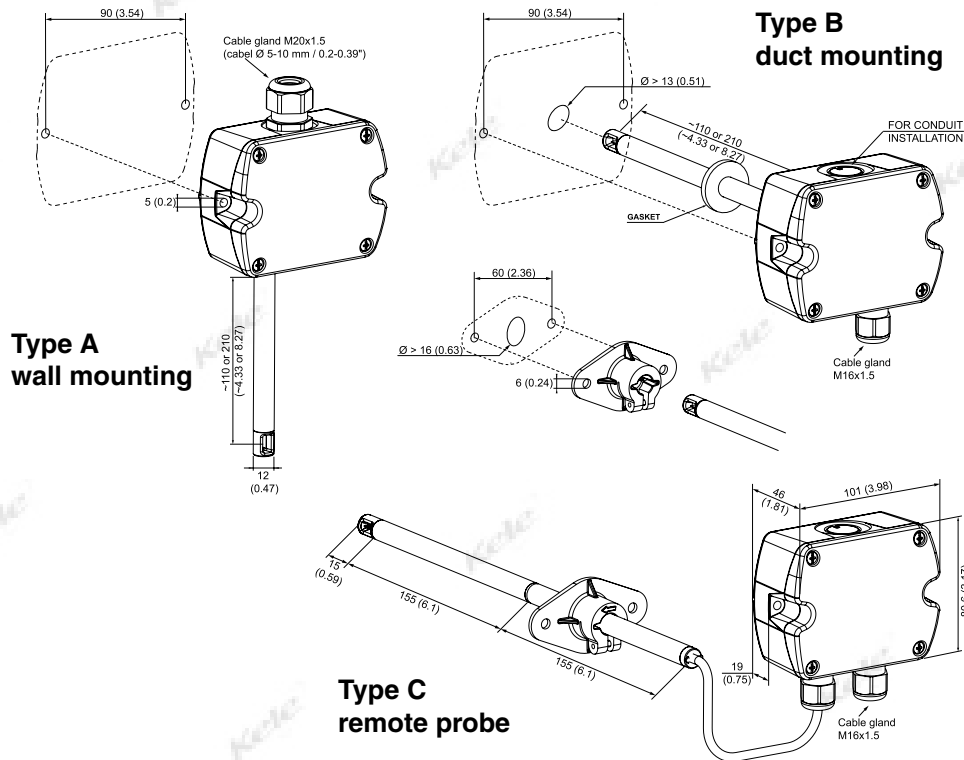
Supply Voltage	24V AC/DC ±20%	Response Time*	Typ. 4 sec or Typ. 1 sec (at constant temperature)
Supply Current	For AC supply max. 180 mA rms (with Display), 74 mA rms (without Display) For DC supply max. 85 mA (with Display), 41 mA (without Display)	Operating Temperature	
Output Signal	0-10 V and 4-20 mA; jumper selectable	Probe	-13° to 122°F (-25° to 50°C)
Loads	0-10 V DC output, 10KΩ minimum resistance; 4-20 mA output, 450Ω maximum resistance	Electronics	14° to 122°F (-10° to 50°C)
Wiring	Screw terminals max. 1.5 mm ² (AWG 16)	Range Selectable	0-200 FPM, 0-300 FPM, 0-400 FPM
Accuracy	Accuracy at 20°C (68°F), 30...200 ft./min, 7.9 ft/min + 2% of mv 45% RH, 1013 hPa, 30...300 ft/min, 9.8 ft/min + 2 of mv 30...400 ft/min, 11.8 ft/min + 2% of mv	Enclosure Rating	Enclosure RP65 / NEMA 4, remote probe IP20)
		Dimensions	3.2"H x 3.2"W x 5.4"D (8.0 x 8.0 x 13.7cm)
		Approvals	CE, RoHS
		Weight	1 lb
		Warranty	1 year

***Response time is measured from the beginning of a step change of air velocity to the moment of reaching 90%.**

NEW!



DIMENSIONS



ORDERING INFORMATION

MODEL	DESCRIPTION
EE660-	Low Air Velocity Transmitter
	OUTPUT
7X	0-10v / 4-20 mA
	HOUSING
A	Wall mount
B	Duct mount
C	Remote probe
	PROBE LENGTH
D	3.9 inches
F	7.9 inches
X	Housing C
	CABLE LENGTH
B	3.3 feet
D	6.6 feet
G	16.4 feet
H	32.8 feet
X	Housing A, B
	DISPLAY
D	Display
X	No display
	UNITS IN DISPLAY
M	Metric (m/s)
N	Non metric (ft/min)

EE660- [] [] [] [] [] [] []

Example: EE660-7XADDXN EE660 air velocity transmitter, wall mount, 3.9 ft. probe, 6.6 ft. cable, no display, non metric